

Bula from Nama Fiji!

NAMA FIJI is a premiere plant-based skincare range that is made with deeply hydrating wild Nama and other naturally-derived ingredients. Nama, which means “sea grapes” is a powerhouse ingredient that provides intercellular and intracellular hydration, with naturally occurring trace minerals and antioxidants for the skin.

We are deeply focused on improving the livelihood of rural women and communities in Fiji through training, employment and Nama harvesting programs in the villages of the Yasawa Islands.



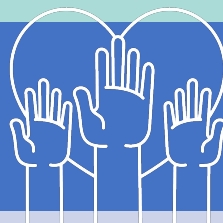
Our Commitment

We believe it is as important to make exceptional products, as it is to care for our community and use our resources sustainably. Environmental and social responsibility is more than a mission: it permeates every facet of what we do at NAMA FIJI and that is reflected in our core brand tenants.



SKIN HEALTH

Our powerhouse hero ingredient, Nama, provides intercellular and intracellular hydration, with naturally occurring trace minerals and antioxidants for the skin.



COMMUNITY

All work done is driven by a desire to benefit rural women and communities through enhanced training, employment and village harvesting.



PLANET

Our Nama replenishes every 2 to 3 weeks after harvesting. Essence Group Fiji meets the Blue Pacific environmentally sustainable practices.

Meet Our Founder

Debra Sadranu is a spa and beauty industry executive with over 30 years of experience. The Australia native came to Fiji in the 1990s and made it her mission to help the local women gain access to training and employment to improve their quality of life.

She launched Spa Academy Fiji in 1998, now a CIDESCO International accredited school, that sponsors, trains and creates opportunities for the women of Fiji.

Debra is an expert in Thalassotherapy, which means treating skin with sea minerals. She leveraged this expertise when she began the Essence Group Fiji in 2008, the parent company of NAMA FIJI.



Our ethos is impacting the livelihood of women through sustainable and socially responsible practices.

- Debra Sadranu

Managing Director and Founder,
Essence Group Fiji

Harnessing the Power of Nama

THALASSOTHERAPY TREATMENT

Our powerhouse hero ingredient nama (“sea grapes”, *Caulerpa racemosa*) grows on the ocean floor in the blue lagoon waters of the Yasawa Island region in Fiji. It is known as the “longevity seaweed” because of its high concentration of essential minerals and vitamins. Our nama promotes long lasting intracellular and intercellular hydration and has a high concentration of ionic mineral salts.

SUSTAINABLE HARVESTING

The best part? NAMA FIJI has partnered with the Market Development Facility (MDF) to develop the world’s first sustainable Nama harvesting program with women from the Yasawa Island. Low impact harvesting methods does not disturb the plant roots, allowing the Nama to replenish every 2-3 weeks after harvesting.

BENEFITS OF NAMA

Deep Hydration: Our Nama has a higher concentration of mineral salts can permeate the cell membrane, keeping our cells hydrated.

Promotes Youthful Skin: High levels of Vitamin C in our Nama provide electrons to free radicals, which stabilizes them and prevents damage.

Firming: Elevated levels of Vitamin A in our Nama boost collagen synthesis to help skin maintain firmness and tone.

Anti-Inflammatory: Rich in Vitamin B, our Nama calms rosacea and inflammation, as well as omega fatty acids that soothe skin.

Boosts Radiance: Potassium in our Nama supports oxygen absorption, which revitalizes a dull complexion.

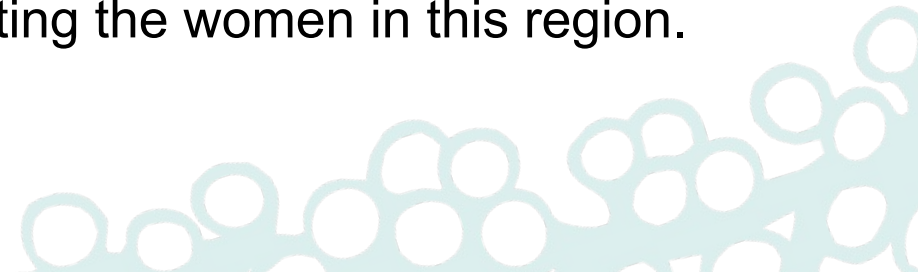
Multi-Dimensional Impact



Everything we do is driven by a desire to support rural women and communities through training, employment, and village harvesting.

In partnership with the Market Development Facility (MDF), A Government funded organization in Australia, Essence Group Fiji has created a system in which all the Nama they purchase comes from local female harvesters, enabling them to support their families. This is the primary source of income in the Yasawas.

Further to our commitment and support of Fiji, our distribution partners all play an integral role in supporting the women in this region.



Our Products

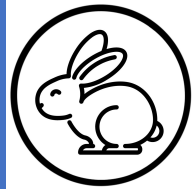
With efficacious formulas that harness the power of Thalassotherapy, all NAMA FIJI products are created with the utmost integrity to bring professional-grade products to the treatment room and to your clients' homes.



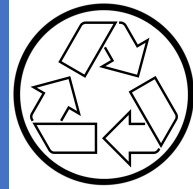
SUSTAINABLE
HARVESTING



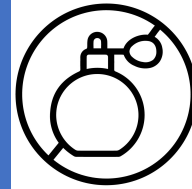
VEGAN



CRUELTY-FR
EE



ZERO WASTE
AMBITION



FRAGRANCE
FREE

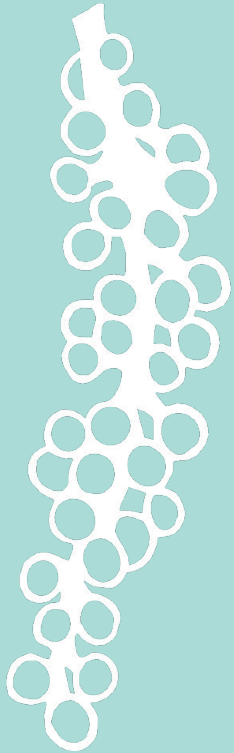


PARABEN
FREE



FIJIAN
MADE

Full list of ingredients is available [here](#).



CLEANSING MILK



CLEANSING GEL

WHAT IT DOES

A non-stripping, gentle formula for sensitive skin made from a natural emulsion of fats and water that cleanses all face makeup and debris without leaving your face dry.

A gentle, rich later cleansing gel that thoroughly purifies the pores, and is particularly suited for irritated and blemish-prone skin. Great for removing stubborn zinc from an SPF!

KEY INGREDIENTS

- Fijian Nama
- *Citrus limon* (lemon) peel oil
- Decyl Glucoside

- Fijian Nama
- Citric Acid
- *Lavandula angustifolia* (lavender) oil

HOW TO USE

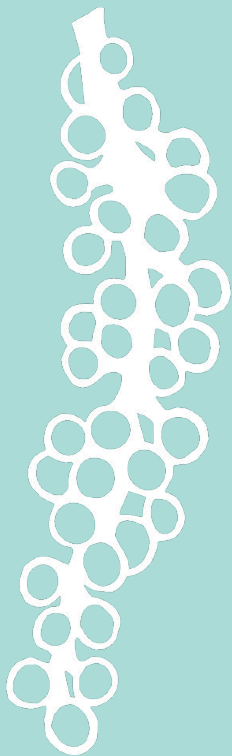
Wet hands, face and décolleté. Gently massage cleanser onto skin in gentle sweeping motion. Rinse with warm water to remove.

Wet hands, face and décolleté. Gently massage cleanser onto skin in gentle sweeping motion. Rinse with warm water to remove.

MSRP/RRP: \$49/£49/€60 / 120mL
Professional: \$69/£69/€69 / 400mL

MSRP/RRP: \$42/£42/€51 / 120mL
Professional: \$65/£65/€69 / 400mL

Treat



FACIAL SCRUB



FACE MASK

WHAT IT DOES

A mechanical exfoliant that sloughs off dead skin cells, while stimulating the outer layer of the epidermis, to encourage absorption of nama's trace elements.

A semi-setting face mask that simultaneously hydrates, and cleanses and refines pores using kaolin clay, and damask rose water to calm stressed skin. And the removal is easy, just wipe off!

KEY INGREDIENTS

- Fijian Nama
- *Macadamia ternifolia* (macadamia) seed oil
- *Prunus dulcis* (sweet almond) oil

- Fijian Nama
- Kaolin Clay
- *Rosa damascena* (damask rose) flower water

HOW TO USE

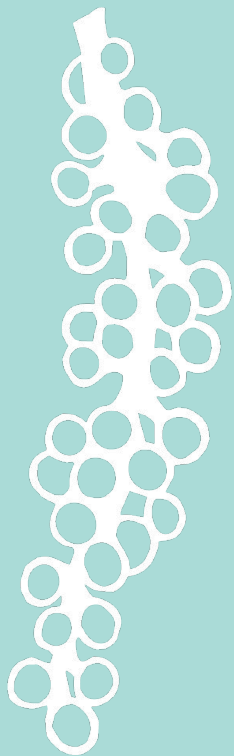
After cleansing, apply a small amount of product to the face and neck. Lightly massage in circular motions. Rinse thoroughly and follow with toner, serum, mask and moisturizer.

After cleansing, apply an even layer over the face and neck. Leave on for 15 minutes and then rinse thoroughly with warm water. Follow with skincare regimen.

MSRP/RRP: \$59/£59/€65 / 50g
Professional: \$121/£121/€121 / 400g

MSRP/RRP: \$80/£80/€89 / 50g
Professional: \$162/£162/€162 / 400g

Eye + Face



EYE CREAM

A rich, plumping eye cream formulated to promote cell growth and recycling of cells, as well as slow down the aging process, to prevent fine lines and wrinkles.

- Fijian Nama
- *Cymbopogon martini* (palmarosa) oil
- *Psidium guajava* (guava) extract

Apply a small amount of product to the ring finger. Pat gently around the contour of the eye, moving from outer corner to inner corner. Apply 1-2x daily, as desired.

MSRP/RRP: \$80/£80/€89 / 30g
Professional: \$351/£351/€351 / 400g



GEL SERUM

WHAT IT DOES

A simple formula suited for all skin types that aids in the absorption of nama's high concentration of trace mineral elements for the ultimate hydration boost for skin.

- Fijian Nama
- *Aloe barbadensis* (aloe) leaf juice
- *Calendula officinalis* (marigold) extract

After cleansing and toning, apply a drop of serum to forehead, chin, and cheeks. Allow product to absorb for a few minutes, then follow with moisturizer or sunscreen.

MSRP/RRP: \$95/£95/€109 / 30mL
Professional: \$372/£372/€372 / 400g



FACE CREAM RICH

A face cream that repairs skin using penetrating oils to lock in moisture throughout all four layers of the skin, as well as essential fatty acids to keep skin soft and supple. *Note: Face Cream available depending on climate, treatment, etc.

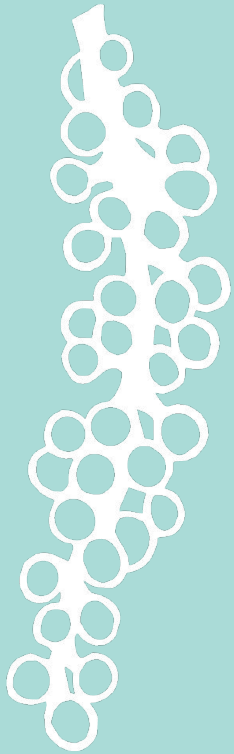
- Fijian Nama
- *Simmondsia chinensis* (jojoba) oil
- *Rosa rubiginosa* (eglantine) oil
- *Persea americana* (avocado) oil

After cleansing and toning, apply a small amount of face cream to face and neck and massage in gently. May be used in the morning and evening.

MSRP/RRP: \$85/£94/€94 / 50g
Professional: \$213/£213/€213 / 400g

HOW TO USE

Body



BODY LOTION

A body lotion formulated to repair the skin barrier function and support healthy cell membranes to decrease the skin's rate of deterioration which discourages sagging skin.

- Fijian Nama
- *Cocos nucifera* (virgin coconut)
- *Plumeria* (frangipani) oil

Gently massage onto the skin. Can be used after cleansing or whenever skin needs a moisturizing boost.

MSRP/RRP: \$42/£49/€49 / 120mL
Professional: \$57/£57/€57 / 400mL



BODY SCRUB

An exfoliating body treatment that sloughs off dead skin cells, while stimulating the outer layer of the epidermis, to encourage absorption of nama's trace elements.

- Fijian Nama
- Glycerin
- *Helianthus Annuus* (sunflower) seed oil

Apply a generous amount to dry skin once or twice per week after cleansing. Exfoliate skin using light upward circular motions for one minute and rinse off with warm water.

Professional Only: \$71/£71/€71 / 400g



MUSCULAR OIL

A face cream that repairs skin using penetrating oils to lock in moisture throughout all four layers of the skin, as well as essential fatty acids to keep skin soft and supple, for a more radiant complexion.

- Coconut carrier blend
- Cedarwood
- Rosemary

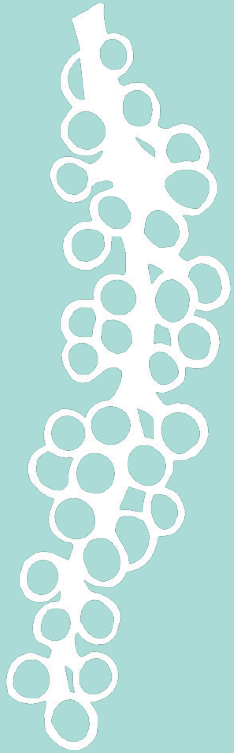
Shake well to mix before use or use a warmer to active the oil ahead of any treatments. Apply to dry skin after cleansing.

Professional Only: \$57/£57/€57 / 400mL

WHAT IT DOES

KEY INGREDIENTS

HOW TO USE



DISCOVERY KIT

WHAT IT DOES

This 8-piece set will cleanse, exfoliate, hydrate and repair the skin.
An excellent SKU to support brand awareness, key gift giving moments, and may also be used as a treatment.

WHAT IT INCLUDES

- Cleansing Gel
- Cleansing Milk
- Facial Scrub
- Eye Cream
- Face Mask
- Gel Serum
- Face Cream
- Body Lotion

HOW TO USE

- Begin with the refreshing Nama Cleansing Gel, designed to gently cleanse and purify your skin. Follow it up with the nourishing Nama Cleansing Milk, which provides a gentle yet effective deep cleanse.
- Exfoliate and invigorate with our Nama Facial Scrub, unveiling a smooth and radiant complexion. Treat your skin to the ultimate pampering with our Nama Face Mask, delivering intense hydration and a youthful glow.
- Enhance your routine with our potent Nama Gel Serum, revitalizing and replenishing your skin. Complete the experience with our indulgent Nama Face Cream, Nama Eye Cream, and Nama Body Lotion, leaving your skin feeling nourished, hydrated, and beautifully transformed.

MSRP/RRP: \$99/£99/€109 / 8 x 15mL

Nama Thalassotherapy For Spas



DETOX CLAY MASK

Combat problematic skin with a thorough deep cleanse for oily, acne-prone complexions. High in beneficial minerals and antioxidants, our Nama will cleanse the pores, absorb toxins and excess oil, while retaining the skin's essential moisture.



DETOX BODY WRAP

Leverage the powerful detoxifying properties of Nama Sea Grapes to detoxify and balance the body. Rich in minerals and antioxidants, Nama is essential for inner health and longevity. Eliminate toxins and free radicals while reducing muscular tension.



FACE & BODY REPLENISH

A replenishing body wrap that provides intense moisture to the skin. Nama's beneficial minerals provide oxygenation to the cells. Skin is left soft, smooth and hydrated. Nama fusion facials~ Infusion of serum to the dermal layers for skin hydration. Combats Rosacea & skin inflammation.



NAMA THALASSO CUISINE

Nama is used throughout Fijian cuisine for its subtle yet rich flavor. Nama-infused water is wonderful pre or post treatment. It rehydrates while detoxifying the inner body. This salty delicacy is high in iodine and beneficial dietary minerals.

Spa Academy - Staffing Solutions



FACIAL & BODY CERTIFICATION

Spa Academy is a world class training institute that offers hands-on practicals in a “real world” Spa Tourism environment. we educate and train local Fijian’s, as well as students from overseas in the latest face and body protocols and procedures using Nama Fiji products. Graduates obtain a CIDESCO certification.



CIDESCO ACCREDITED

Established for over 25 years, Spa Academy is a recognized award winning CIDESCO accredited Spa Training Facility with thousands of graduates working in the day and resort spa industry, both locally and internationally. We have “train the trainer” programs in addition to student certification programs.



ACCREDITED GRADUATES

Graduates of the Spa Academy are full CIDESCO certified and go on to work in the tourism industry at many of the most exclusive 5 Star Resorts on Fiji, as well as internationally. Spa Academy graduates. Many graduates’ training is subsidized by spas internationally who then hire the graduates for up to 3 years.



THERAPISTS FOR YOUR SPA

Spa Academy offers several training programs to local and international clients looking to have CIDESCO certified therapists and spa personnel. For as little as \$3000 USD you can sponsor someone in Fiji to be trained and certified in the latest protocols and ready to work in your spa in 6 months or less!



Glowing Reviews

The Nama Fiji Eye Cream has been one of my top eye creams! And I've used LOTS of eye creams. It gives me such satisfaction when I actually find products that work and I am able to share with others!

- Bobbi Del B | Medical Esthetician

It's been over a month of using [Nama Fiji products] daily and honestly I haven't experienced a smoother, softer and healthier skin on my face ever before!! If I knew of how AMAZING are the properties and benefits of SEAWEED on skin care I would have tried this way earlier!

- Ale Cat | Professional Figure Skater

I consulted with my dermatologist and had to go on Accutane for my acne, which is very drying. However, I've been only using the Nama Fiji products [Cleansing Gel, Gel Serum, Face Cream] and I haven't had any dryness at all on my face!"

- Emily T. | Verified Customer

How We Can Support You



ENHANCED PROTOCOLS

With face and body protocols in place, NAMA FIJI products will enhance your existing services menu.



TRAINING PROGRAMS

With the Spa Academy at the heart of what we do, we understand the value of training and have programs in place to support therapists and staff.



SELLING CEREMONIES

NAMA FIJI has established selling ceremonies in place to ensure there is a consistent experience at all touchpoints.



STAFFING SOLUTIONS

As a valued spa partner, Essence Group Fiji can facilitate your staffing solutions with our fully qualified spa therapists from our company's own Spa Academy Fiji.



SAMPLING PROGRAMS

We have a strategic sampling program in place (15mL trial sizes) to support brand awareness, event activations, and an enhanced customer experience.



MARKETING STRATEGY

Our team leverages influencer activations, as well as Fiji tourism to build brand awareness across digital and localized marketing strategies.

Let's Keep in Touch

CONTACT

North America/UK/EU

info@nama-fiji.com

SALES

Naomi Sullivan-Callender & Team

North America/UK/EU Distributor

sales@nama-fiji.com

+1.307.459.0859

WEBSITE

www.nama-fiji.com

SOCIAL

[@namafiji](https://www.instagram.com/namafiji)



Vinaka!

NAMA
FIJI

