



JUSTICE FOR ALL

JUSTICE
HAIRCARE™

COOL MINT SHAMPOO & CONDITIONER

CLEANSE
&
RESTORE

A botanical scalp detox system to refresh and activate the scalp. Menthol stimulates blood circulation, creating the ideal conditions on the scalp for healthy hair growth.

Cool Mint will balance oily and dry scalps whilst adding body and shine to the hair. The fresh mint fragrance will help your scalp feel calm, cool and refreshed.



WHAT'S IN IT?

- **Peppermint, Kola Nut, Pine Oil & Rosemary Leaf Extracts** work to stimulate hair growth and hair density by improving circulation, providing the ideal conditions for healthy hair growth.
- **Chamomile, Sage, Mayweed, Arnica, and Watercress Extracts** work together to soothe and clam your scalp.
- **Wheat Protein** strengthens hair, retaining moisturise while giving body and shine.
- **Burdock Root, Ivy Leaf & Nasturtium Flower Extracts** act as effective antioxidants.
- **Marigold Flower Extract** works to hydrate the hair and the scalp and improve collagen production at the hair follicle.

How to apply

Shampoo: Apply to wet hair, massage scalp and hair in circular motions. Rinse thoroughly.

Conditioner: After shampooing, massage conditioner through hair, concentrating on mid lengths and ends. Rinse thoroughly.

VOLUME BOOST SHAMPOO & CONDITIONER

FINE HAIR VOLUME & SHINE

Specially formulated for fine and thinning hair types to Boost Volume! Cleansing the hair without weighing it down, Cotton Seed Oil Extract, Hibiscus Flower Vinegar, and Soy Protein work together to maintain the hair's natural hydration levels and add structure, body, and volume with shine.

Specially formulated with Cotton Seed Oil extract delivering a creamy, light weight texture that is easy to apply. This fine hair friendly formula improves the quality of the hair and adds volume, softness, and shine without adding weight!



WHAT'S IN IT?

- **Cotton Seed Oil Extract:** Lightweight, naturally derived oil adds condition and shine to hair without weighing it down.
- **Hibiscus Flower Extract:** Made from soaking Hibiscus Flowers in Apple Cider Vinegar, the extract works to regulate natural Scalp Oil (Sebum).
- **Soy Protein:** A balanced composition of peptides and amino acids to add strength and structure to the hair.

How to apply

Shampoo: Apply to wet hair, massage hair and scalp in circular motions. Rinse thoroughly.

Conditioner: For best results use after shampooing hair with Volume Boost Shampoo.

Massage conditioner through the hair concentrating on mid lengths and ends. Rinse thoroughly.

SMOOTH & GROOM PREMIUM SHAMPOO & DEEP CONDITIONER

REGENERATING
CARE FOR
DAMAGED HAIR

A Shampoo and Hair Mask with our **JUSTICE Pro Keratin Formula** containing bio-metric hair repairing proteins, botanical stem cells and marine collagen to slow the aging process of your hair and work to prevent hair loss.

Leaving your hair revitalised, structurally strong with a smooth healthy shine finish.



WHAT'S IN IT?

- **Hyrolysed Keratin Protein** This works to immediately to repair any damage.
- **Hydrolysed Collagen** to increase the elasticity in the hair and works with the Keratin Protein to support the overall hair regeneration.
- **Apple Stem Cells** slows down the aging process of the hair structure and also works to minimise hair loss.
- **Lecithin** An essential fatty acid necessary for the regeneration process adding strength, condition and a smooth shine.

How to apply

Shampo: Apply to wet hair, massage hair and scalp in circular motion, rinse thoroughly.

Hair Mask: Apply after shampooing the hair, concentration on mid lengths and ends, allow 5-10 minutes to comb through and massage, rinse.

PERFECT VIOLET SHAMPOO & HAIR MASK

MAINTAIN TONE
&
ADD SHINE

Hair care system to maintain blonde hair. True violet will neutralise unwanted brassy tones, cleanse and brighten in blonde, silver & grey hair types.

Improve the structure of the hair, repairing any cuticle damage whilst creating shine without weighing the hair down.



WHAT'S IN IT?

- **Panthenol (Pro-vitamin B5)** Plant based nutrient that provides elasticity and gloss as well as reducing split ends and conditioning damaged hair.
- **Hydrolysed Wheat Proteins** strengthens the hair, retaining moisture whilst giving body and shine.
- **True Violet Pigment** in the shampoo product will neutralise any unwanted warm tones in the hair.

How to apply

Shampoo: Apply to wet hair, massage scalp and hair in circular motions. Leave product in the hair for 1-5 minutes, rinse thoroughly.

Hair Mask: Apply to the mid lengths and ends of hair, then comb through with a wide tooth comb. Leave in the hair for 3-5 minutes.

SCALP TREATMENT SHAMPOO

VIGOUR
&
ANTI-DANDRUFF

An Anti-Dandruff and Anti-Fungal treatment shampoo that combines botanically based active ingredients Ziziphus Joazeiro Bark Extract, Lemon & Eucalyptus Extracts and Hibiscus Flower Vinegar to calm the scalp and control sebum (oil) production, whilst treating dandruff.



WHAT'S IN IT?

- **Ziziphus Joazeiro Bark Extract:** Contains a combination of Anti-Fungal and Anti-Bacterial properties (Betulinic, Ursolic and Aliphatic Acids) to control the cause of Dandruff and soothe the scalp.
- **Extract:** High in Antioxidants, AHA and Vitamin C which are anti-inflammatory properties for the scalp.
- **Hibiscus Flower Extract:** Made from Apple Vinegar and Hibiscus Flower, works to regulate sebum (oil) and act as an anti-irritant.
- **Eucalyptus Extract:** Natural Oils and Tannins act as an astringent for Sebum (Oil) and contain antimicrobial properties which are calming to the scalp.

How to apply

Apply to wet hair and massage in gently. Leave product to act for approx 3 minutes and then rinse thoroughly.

TREATMENT MASK

REPAIR, STRENGTHEN
&
ULTRA CONDITIONING

An intensive Treatment Mask for your hair with repairing proteins, designed for use on porous and damaged hair (chemically, environmentally or thermally damaged) to strengthen, improve the elasticity and create maximum shine.

The Treatment Mask works to penetrate the cuticle and add protein and moisture to the inner structure of the hair to create improved elasticity, shine and strength.



WHAT'S IN IT?

- **Hydrolysed Soy Protein & Panthenol (Pro Vitamin B5)** together work to repair the damage in hair, increase the elasticity adding strength and moisture back to the hair.
- **Jojoba Oil** adds a shine finish to hair and protects and illuminates coloured hair.

How to apply

Shampoo hair and remove excess water by towel drying. Apply to the mid lengths and ends of hair, then comb through with a wide tooth comb. Leave in for 5 minutes to 10 minutes. Use weekly as a treatment in your care regimen or 2 -3 times a week for extremely damaged hair for intense repairing results.

DRY NUTRIENT SHAMPOO

VOLUME, SOFTNESS
&
SHINE

A fresh botanical light weight cleansing spray, instantly transforms limp and dull hair back into your fresh, voluminess style.

Maintain your hairstyle longer and add shine without any powdery residue any time with a convenient spray application.



Botanical
Complex

WHAT'S IN IT?

- **Rice Starch Extracts** work to absorb excess oil, cleansing the hair to restore body and bounce. Ideal for second day styling and adding volume when styling.
- **Sunflower Seed and Oat Leaf Extracts** condition and protect, preventing breakage and leaving hair looking soft and healthy. Adding shine without an oily or powdery finish.

How to apply

Shake the can well, hold 20 – 30cm away from dry hair and spray evenly into the hair concentrating on the root area. Massage into the scalp with your fingertips, wait 2 – 3 minutes then brush through the entire length of hair. Style as required.

JUSTICE
HAIR CARE™

PLATINUM CONDITIONING SHAMPOO & REPAIRING CONDITIONER

REPAIR, SMOOTH
&
MOISTURISE

Our Repairing Shampoo and Conditioner strengthens hair with active botanicals improving the quality and condition of the hair. Our repairing system contains Keratin Protein to instantly repair and strengthen damaged, brittle areas of the hair.

The platinum powered moisture locking properties of botanical Amino Acids smooth the cuticle, detangle and add moisture and vitality back into hair, whilst the silky properties of Jojoba and Olive Oils work to deeply condition the hair.



WHAT'S IN IT?

- **Hyrolysed Keratin Protein** works to restores strength to the hair shaft, repairs damaged areas and nourishes the hair.
- **Corn Starch, Lecithin and Beet Extract** improves hair condition, elasticity and bounce also adds colour and heat protection to the hair.
- **Olive Oil & Jojoba Oil.** Essential fatty acids necessary for strengthening, added condition and maximum shine, improves condition and increases shine.

How to apply

Apply Shampoo to wet hair and emulsify, rinse thoroughly and repeat if necessary. Remove excess water and add Conditioner to the mid-lengths and ends of the hair, combing through to evenly distribute. Rinse out thoroughly after 3-5 mins.

10 SECOND HAIR MIRACLE

INSTANT MOISTURE, MAGIC SMOOTHING
&
NUTRIENT FAST

Farewell to dry and damaged hair in 10 seconds. Heat emulsion action treatment that warms the hair and scalp upon application. Enriched with ingredients to help to soothe the scalp, repair damaged hair and improve elasticity. Eliminate frizz and maintain a strong healthy hair result with maximum shine.



WHAT'S IN IT?

- **Hydrolysed Keratin Protein** works to repair any damage to cuticle layer and strengthen the overall quality of the hair.
- **Argan Kernal Seed Oil** The oil from the Argan kernal is the closest match to our bodies natural oil (Sebum). This weightless hair oil to use daily for shine, added moisture and works to improve the elasticity and overall condition in the hair.
- **Panthenol (Pro Vitamin B5)** works to smooth and protect the hair, adding moisture and improving elasticity, creating easily styled hair without an weighty finish.

How to apply

Apply to shampooed, towel dried hair. Use the nozzle to apply appropriate amount of product to hair. (depending on length and density) Massage for 8 seconds after which you will notice the product turns into white cream. Rinse off hair. Recomendted use 1-2 times a week.

HEAT PROTECT PROTEIN+ SPRAY

HAIR PROTECTION FOR HOT STYLING

UV FILTER, HEAT SHIELD
& SHINE

QUICK OVERVIEW

TEXTURE: Liquid Spray

HOLD: Zero

FINISH: Matte

APPLICATION: Wet or dry hair

HAIR TYPE: All hair types



KEY FEATURE & BENEFITS

- PROTECT** • Provides up to 230 degrees Celsius protection when using thermal styling tool (e.g. blow drying, straighteners and curling tools).
- ANTI-FRIZZ** • Supports hair health with anti-frizz factor from natural oils.
- SHINE** • Wheat protein and panthenol work to add structure and shine to the cuticle layer.

How to apply

Apply evenly from roots to ends on damp or dry hair prior to any thermal styling, leave in.

Pro Tip

When styling dry hair, give hair a blast with cool air from the dryer to dry in the product before using a thermal styling tool.

SEA SALT SPRAY

MEDIUM HOLD
TEXTURISING SPRAY

UV PROTECTOR,
TEXTURE &
PARABEN FREE

Hold Factor

1 2 3 4 5 **6** 7 8 9 10

QUICK OVERVIEW

TEXTURE: Liquid Spray

HOLD: Medium

FINISH: Matte

APPLICATION: Wet or dry hair

HAIR TYPE: All hair types



KEY FEATURE & BENEFITS

VOLUME

- Increases hair thickness giving more body and texture. Weightless moisture and condition in longer hair.

MOVEMENT

- Combination of resins and polymers creates body and raw texture with medium hold for natural movement.

BEACHY

- Fresh, clean salty breeze fragrance. Sea Salt Spray contains a protective layer for added UV protection and is easily removed from the hair.

How to apply

Apply to wet or dry hair, spraying directly over roots approx. 30cm away from the head. Scrunch through the length and leave to dry naturally for texture and separation. Designed to create the natural tousled beach look.

VOLUME BOOST TEXTURE SPRAY

VOLUMISING TEXTURE SPRAY FOR STYLING

VOLUME
TEXTURE
SHINE

Hold Factor

1 2 3 4 5 6 7 **8** 9 10

QUICK OVERVIEW

TEXTURE: Liquid Spray
HOLD: Strong Texture
FINISH: Volume & Texture
APPLICATION: Damp hair
HAIR TYPE: All hair types



KEY FEATURE & BENEFITS

VOLUME

- Contains Cotton Seed Oil extract with other volumising ingredients to create a lightweight formula lifting hair off the scalp.

TEXTURE

- Soy Proteins help to add structure with combined polymers to create styling texture in the hair.

SHINE

- Even with a lightweight formula Volume Boost Texture Spray will still work to create a natural shine in your hair.

How to apply

Apply evenly from roots to ends on damp or dry hair prior to styling, leave in.

JUSTICE
HAIRCARE™

SMOOTH & GROOM 2 PHASE "NOURISH SHOT"

WEIGHTLESS DAILY CONDITION & PROTECTION FOR HAIR

An instant lightweight conditioning shot in two phases. The upper phase (opaque) acts on the external layer of the hair (cuticle layer) smoothing the cuticle, improving the appearance by adding shine and easy styling ability.

The lower phase (translucent) restores the inner core of the hair, strengthening the hair, nourishing and eliminating static electricity, whilst leaving no residue on the hair.



WHAT'S IN IT?

- **Hydrolysed Wheat Protein** works to repair any damage to cuticle layer and strengthen the overall quality of the hair.
- **Horse Chestnut Seed Extract** A powerful botanical antioxidant with cell protective qualities, protecting the keratin and collagen cells in the hair and maintaining a healthy cell structure.
- **Avacado and Jojoba Seed Oils** work to assist in repair process and add smoothness and shine to the cuticle layer of the hair.

How to apply

Can be applied to wet or dry hair. Shake the bottle to mix the two phases, spray onto midlengths and ends of the hair, do not rinse out.

SMOOTH & GROOM

LIGHT HOLD
CONDITIONING CRÈME

**LIGHTWEIGHT, REPAIR
ANTI FRIZZ &
WEARABLE TREATMENT**

A leave in conditioning cream acts directly on the surface of the hair, providing instant smoothing on unruly/ frizzy hair, works to repairing split ends and damage.

Hydrates and adds super smoothing and shine with a lightweight finish.

#1
BEST
SELLER



WHAT'S IN IT?

- **Hydrolysed Japanese Silk Protein** to repair the structure of the hair while adding shine and condition. Fresh fragrance of fresh peach, tangerine, ripe pear and raspberry.
- **Panthenol (Pro Vitamin B5)** works to smooth and protect the hair, adding moisture creating easily styled hair without an weighty finish.
- **Leave-in Wearable Treatment Cream** increases shine and softness in the hair, seals and repairs the ends tames frizz, adding control to strong unruly hair.
- **Solar and Thermal Filters** protect hair against damaging effects of UV light and heat from thermal styling tools, such as blow dryer or irons.

How to apply

Squeeze a small amount into your palm and distribute evenly into damp or dry hair from roots to ends. Layer the product into your hair to create stronger results and more control. Dry hair and re-apply to the ends to add definition. Use daily for best results.

JUSTICE
HAIR CARE™

CURL CRÈME

GEL CRÈME



VOLUME, CONTROL
&
CURL ACTIVATOR

Hold Factor

1 2 3 **4** 5 6 7 8 9 10

QUICK OVERVIEW

TEXTURE: Gel Crème
HOLD FACTOR: Medium
FINISH: Added shine
APPLICATION: Wet or dry hair
HAIR TYPE: Frizzy, curly or wavy



KEY FEATURE & BENEFITS

CURL ACTIVATOR

- Creates and defines curls whilst controlling frizz, increasing volume of curl and adding shine.

VOLUME

- Panthenol (Pro Vitamin B5) for added moisture and strength adding structure and holding volume.

CONTROL

- Medium hold, allowing for bounce and movement in curl with long lasting control. Sweet Citrus fragrance.

STRENGTH

- Contains Keratin protein for added moisture, helps repair damaged hair.

How to apply

Dispense two pumps of the Curl Crème into palm of hands and emulsify. Apply on wet hair and spread uniformly from roots to ends. Blow dry with diffuser attachment or leave to dry naturally.

PERFECT BLOWOUT MOUSSE

PERFECT FOR ALL FORMS OF THERMAL STYLING

**48 HOUR HOLD, HEAT ACTIVATED,
DAMAGE & COLOUR PROTECTION**



Hold Factor

1 2 3 4 5 6 7 **8** 9 10

QUICK OVERVIEW

TEXTURE: Mousse Foam

HOLD: Strong

FINISH: Shine

APPLICATION: Damp towel dried hair

HAIR TYPE: All hair types

KEY FEATURE & BENEFITS

- 48 HOUR HOLD** • Enjoy 48 Hour Hold, allowing effortless next day refreshing when heat activated.
- HEAT ACTIVATED** • Perfect for thermal styling, blow drying, curling or straightening the hair.
- DAMAGE & COLOUR PROTECTION** • Crambe Seed Oil active Ester's support and improve hair elasticity, bounce, and reduce fade in coloured hair.

How to apply

Shake the can well, turn upside down and dispense into palm of hand. Apply evenly from roots to ends on damp hair prior to any thermal styling, leave in and style the hair.

Pro Tip:

When reviving thermal styling the next day, apply JUSTICE Heat Protect Protein + Spray and dry in with cool air for added thermal protection.

SILVER STYLING

TONES, SHINE
&
HEAT PROTECTANT

Hold Factor

1 2 3 **4** 5 6 7 8 9 10

QUICK OVERVIEW

TEXTURE: Foam
HOLD FACTOR: Medium
FINISH: High shine
APPLICATION: Wet hair
HAIR TYPE: All hair types



KEY FEATURE & BENEFITS

RICH MOUSSE

- Contains Panthenol (Pro Vitamin B5) to improve elasticity, volume and body. A rich textured whipped mousse with violet pigment creates long lasting shine and voluminous results.

TONES

- Ideal to maintain toned highlights, ash tones and grey hair, adding shine to the hair without weight, no residue or staining.

NOURISHES

- Thermal protectant, perfect for use with styling tools with a sweet floral and citrus fragrance.

How to apply

Shake well before each use, spray on hair from mid-lengths to ends and style as desired.

JUSTICE
HAIRCARE™

STYLING CREAM

STYLING

**HYDRATING, MEDIUM HOLD
& NATURAL FINISH**

Hold Factor

1 2 3 **4** 5 6 7 8 9 10

QUICK OVERVIEW

TEXTURE: Light Gel

HOLD: Medium

FINISH: Semi Shine

APPLICATION: Wet or dry hair

HAIR TYPE: All hair types



KEY FEATURE & BENEFITS

- A hydrating, versatile medium hold styling cream with a natural finish when left to dry naturally or work into a full styling hold when combined with blow-drying or thermal irons.
- Formulated with Keratin Protein and Pro Vitamin B5, to add strength and structure especially to thermal styling techniques.

Styling Tip!

A versatile styling product for a natural finish. Alternatively, work Styling Cream into your hair prior to thermal styling for a stronger finish and hold.

JUSTICE
HAIR CARE™

SUPER HOLD GEL

STYLING



**SUPER HOLD, CONTROL
&
SHINE**

Hold Factor

1 2 3 4 5 6 7 8 **9** 10

QUICK OVERVIEW

TEXTURE: Gel
HOLD: Super
FINISH: Gloss
APPLICATION: Wet hair
HAIR TYPE: All hair types

KEY FEATURE & BENEFITS

- STRENGTH**
- A high performance super strong hold gel, with excellent strength. Formulated with co-polymers for fixing styling with super hold factor and long-lasting results.
- STYLE**
- Provides long lasting hold leaving a gloss finish to the hair. Keeps the hair style in place all day.
- CARE**
- Easily removed from the hair without build up, contains panthenol to help with elasticity.

Styling Tip!

Apply appropriate amount to damp hair then spread evenly with a comb or fingers. Style as desired and leave to dry naturally. Do not comb once the gel has dried.

JUSTICE
HAIRCARE™

CLAY

MEDIUM HOLD
MOULDING CLAY



**HUMIDITY RESISTANT, FIXING AGENTS
&
PARABEN FREE**



Hold Factor _____

1 2 3 4 **5** 6 7 8 9 10

QUICK OVERVIEW

TEXTURE: Clay

HOLD: Medium

FINISH: Glaze

APPLICATION: Wet or dry hair

HAIR TYPE: All hair types

KEY FEATURE & BENEFITS

MOULD

- Medium hold moulding tool, combining Kaolin Clay with fixing agents to create a humidity resistant film.

STYLE

- Clay used for styling and finishing without crunch. ideal for short textured styles, dressing out and defining direction. Fresh coconut fragrance.

VOLUME

- Adds shine and volume to hair and is easily removed with shampoo.

Styling Tip!

Apply a thumbnail sized amount of Clay into your hand and rub between palms before application to hair to style. Work into hair and mould into shape. Blow-dry into the hair for extra body, use more product to finish and define.

FIRM CLAY

STRONG HOLD
MOULDING CLAY

SHAPER, SEMI
SHINE &
FIXING AGENTS

Hold Factor

1 2 3 4 5 6 7 **8** 9 10

QUICK OVERVIEW

TEXTURE: Clay

HOLD: Firm

FINISH: Semi shine

APPLICATION: Wet or dry hair

HAIR TYPE: All hair types



KEY FEATURE & BENEFITS

MOULD

- More Kaolin Clay for stronger hold with fixing agents to create a humidity resistant film.

CONTROL

- Perfect for shorter styles for added texture, definition and shaping Long lasting and easily removed from the hair with shampoo.

VOLUME

- Adds a semi shine and volume to hair.

Styling Tip!

Apply a thumbnail size of Firm Clay into your hands and rub between palms before application to hair to style. Apply to wet or dry. Work into the hair to create shape for a firm hold finish.

MATTE

STRONG HOLD
MATTE PASTE



NATURAL CLAY, HUMIDITY RESISTANT
&
PARABEN FREE

Hold Factor

1 2 3 4 5 6 7 8 **9** 10

QUICK OVERVIEW

TEXTURE: Clay

HOLD: Strong

FINISH: Matte

APPLICATION: Wet or dry hair

HAIR TYPE: All hair types



KEY FEATURE & BENEFITS

DRY

- Maximum Kaolin Clay for strong hold & a matte finish, providing a firm control and finish to the hair style.

TEXTURE

- Perfect for shorter textured styles to create style definition Long lasting and easily removed from the hair with shampoo.

STRONG

- Retains moisture in the hair and blocks out humidity, with a fresh Kiwi Fruit fragrance.

Styling Tip!

Apply thumbnail sized amount of Matte into your hand and rub between palms before applying to the hair to style. Work into the hair and mould into shape. Layer into the hair to achieve desired strength.

PLATINUM MIRACLE DUST

VOLUME POWDER

TEXTURE, HIGH LIFT,
NATURAL LOOK

Hold Factor

1 2 3 4 5 6 7 **8** 9 10

QUICK OVERVIEW

TEXTURE: Powder
HOLD: Strong
FINISH: Natural
APPLICATION: Dry Hair
HAIR TYPE: All hair types



KEY FEATURE & BENEFITS:

Ultra-Light weight, workable finishing powder. Designed to give hair an instant volume boost with a natural finish. Long lasting results with structure and strong hold.

TEXTURE: Silica to add surface area to each strand of hair.

LIFT: Volume booster to hold.

NATURAL LOOK: Aloe leaf extract and Coconut Oil for a natural finish on the hair.

Styling Tip!

Pump onto dry hair at the roots.

Disperse and work through hair with fingertips to create volume and the desired shape.

JUSTICE
HAIRCARE™

SMOOTH & GROOM ENDZ SERUM

WEIGHTLESS DAILY REPAIR FOR SPLIT ENDS

A lightweight serum designed to nourish the hair, adding softness and shine whilst working to treat and seal split ends.

A treatment tool that can be added into your haircare regime and used daily in the hair.



WHAT'S IN IT?

- **Jjobba Seed Oil** A rich antioxidant that works to nourish the cuticle layer of the hair, penetrate and repair capillary fibers in the ends of the hair.
- **Smoothing Agents** work to seal the cuticle and ends of the hair, adding maximum shine and creating an anti-static effect in the hair.

How to apply

Can be applied to wet or dry hair. Distribute small amount into the palms and rub together, distribute by smoothing through mid-lengths and ends of the hair. Concentrating on the ends and any damaged areas. Do not rinse out.

WORKABLE HAIRSPRAY

STRONG HOLD
AEROSOL FREE SPRAY

**NO RESIDUE, AEROSOL FREE
&
STYLING AND FINISHING**

Hold Factor

1 2 3 4 **5** 6 7 8 9 10

QUICK OVERVIEW

TEXTURE: Liquid
HOLD FACTOR: Medium
FINISH: Moderate shine
APPLICATION: Wet or dry hair
HAIR TYPE: All hair types



KEY FEATURE & BENEFITS

NATURAL STRENGTH

- Eco-friendly aerosol free pump action hairspray with a fresh fruity fragrance. Can be used in styling and finishing the hair.

DEFINES

- Provides flexibility, shine and softness. Quick drying with UV and thermal protection added.

LONG LASTING

- No residue or build up left on the hair, easily brushed out. Medium hold factor allowing movement whilst maintaining original shape.

How to apply

Spray over the finished style, from approximately 30cm away from the head. For more creative styles, apply to sections directly and twist into desired shape before spray dries, then run through fingers to dress out the style.

EXTREME HOLD HAIRSPRAY

OUR STRONGEST HOLD

**HIGH PERFORMANCE,
PERFECT FINISH &
MISTING SPRAY**



Hold Factor

1 2 3 4 5 6 7 8 9 **10⁺**

QUICK OVERVIEW

TEXTURE: Mist Spray
HOLD: Extreme
FINISH: Shine
APPLICATION: Dry Hair
HAIR TYPE: All hair types

KEY FEATURE & BENEFITS:

Extreme Hold is a high-performance maximum hold hairspray - expertly designed to create the strongest hold for your hairstyle whilst maintaining great shine and vitality. Enriched with Pro Vitamin B5 & Soy Protein for added elasticity and strength.

Extreme Hold is a quick drying misting spray with non-sticky formula, brushes out of the hair easily.

- High Performance Hold
- Our strongest formulation ever
- Quick Drying Mist
- Non-sticky formula brushes out easily for a perfect finish
- Rich in peptides, amino acids and vitamin B
- Vegan Friendly

How to apply

Shake can well before use.

Spray directly onto dry hair from approx. 30cm.

JUSTICE
HAIRCARE™

ARGAN OIL SPRAY

SOFT HOLD
STYLING OIL SPRAY

NATURAL SHINE, SMOOTHS
&
BOOST HYDRATION

Hold Factor

0 1 2 3 4 5 6 7 8 9 10

QUICK OVERVIEW

TEXTURE: Liquid
HOLD FACTOR: Soft
FINISH: High shine
APPLICATION: Dry
HAIR TYPE: All hair types



KEY FEATURE & BENEFITS

- IMPROVE**
- The oil from the Argan Kernal is the closest match to our bodies natural oil (Sebum). This weightless hair oil to use daily for shine, added moisture and works to improve the elasticity and overall condition in the hair.
- NATURAL**
- Contains high levels of Vitamin E and moisturising agents boost hydration. Hazelnut and vanilla fragrance.
- PROTECT**
- Seals and repairs the cuticle locking in hair colour and adding shine with an easy light spray application.

How to apply

Spray small amount on dry hair daily. Concentrate on mid lengths and ends.

KIDS RANGE

BECAUSE HAIRCARE SHOULD BE FUN

BYE TEARS, COOL, GENTLE

JUSTICE Professional Kids is focused on children from 3 – 9 years of age, the transition ages between baby and puberty. From this age, in both boys and girls' sebaceous activity increases as a first symptom of puberty. Therefore, physiological characteristics such as: oilier hair and skin, body odor (including the scalp), can lead to flaking of the scalp or excess oil issues. Children of this age start to need product that is still soft and gentle enough for young hair and scalps but cleansing and conditioning at the same time. And, why not include a styling product specifically formulated just for them!



RANGE:

- Shampoo 400ml
- Conditioner 400ml (leave in spray)
- Wax 100ml

FRAGRANCE:

Has a perfume reminiscent of a childhood memory thanks to a cocktail of red fruits and cherry candy with a background of vanilla and tonka bean (seed of a tree native to the Orinoco).



A circular image showing a colorful swirl of lollipop candy with various colors like red, yellow, green, and blue.

KEY ACTIVE INGREDIENTS AND BENEFITS

Kids Tutti Frutti Shampoo & Kids Tutti Frutti Conditioner:

The key actives are a complex of plant extracts from: Red Raspberries, Strawberries and Forest Blackberries, these fall within the group of so-called “superfruits” for their antioxidant properties. These three berries are mainly rich in sugars and Vitamin C, among others. Due to their composition in sugars, they are considered as moisturising actives, which form a thin protective film on the skin avoiding and delaying the loss of trans epidermal water. Vitamin C has photoprotective properties that make it able to neutralise free radicals generated by UVB radiation.

Kids Tutti Frutti Wax:

Textured wax that defines the hair, with a medium fixation, natural appearance and durable finish. It has no greasy feel and is easily removed with washing. It contains Glycerin, which prevents water loss from the hair, improving hydration, improving the shine and texture of the hair.

How to apply

Shampoo: Apply to damp hair, emulsify for a few minutes and rinse thoroughly.

Conditioner: Shake bottle and apply by spraying on to damp or dry hair. Leave in.

Wax: Apply to damp or dry hair with your fingers and style.

AMMONIA FREE TAKE HOME HAIR COLOUR

100% GREY COVERAGE, QUICK APPLICATION
NATURAL OILS FOR OPTIMAL HAIR CARE AND
COLOUR COVERAGE!

Our rich colour cream is formulated with Keratin and contains 5 fermented Botanical Oil extracts for rich deep conditioning colour results and specialised care of your hair.

Available in 20 shades including 3 toners:

0/08 Iridescent Toner

0/11 Ash Toner

0/21 Pearl Toner

3/0 Dark Brown

5/0 Medium Natural Brown

6/0 Light Natural Blonde

6/2 Light Beige Brown

6/56 Light Violet Brown

6/95 Light Hazelnut Brown

7/0 Dark Natural Blonde

7/1 Dark Ash Blonde

7/13 Dark Ash Golden Blonde

7/2 Dark Beige Blonde

8/0 Medium Natural Blonde

8/1 Medium Ash Blonde

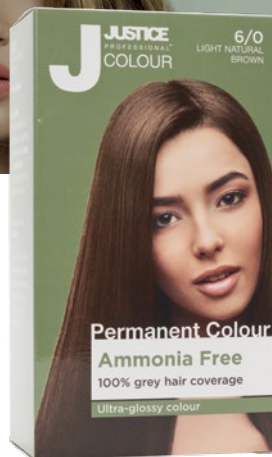
8/2 Medium Beige Blonde

9/0 Light Natural Blonde

9/1 Light Ash Blonde

11/0 Platinum Blonde

12/1 Ice Grey Super Lightener



KEY ACTIVE INGREDIENTS & BENEFITS

Argan Oil & Sunflower Seed Oil

- Adds condition and shine to your hair, stimulates hair growth, moisturising and anti-frizz with added sun protection.

Green Tea Oil

- A powerful antioxidant adds condition to the hair and stimulates healthy hair growth.

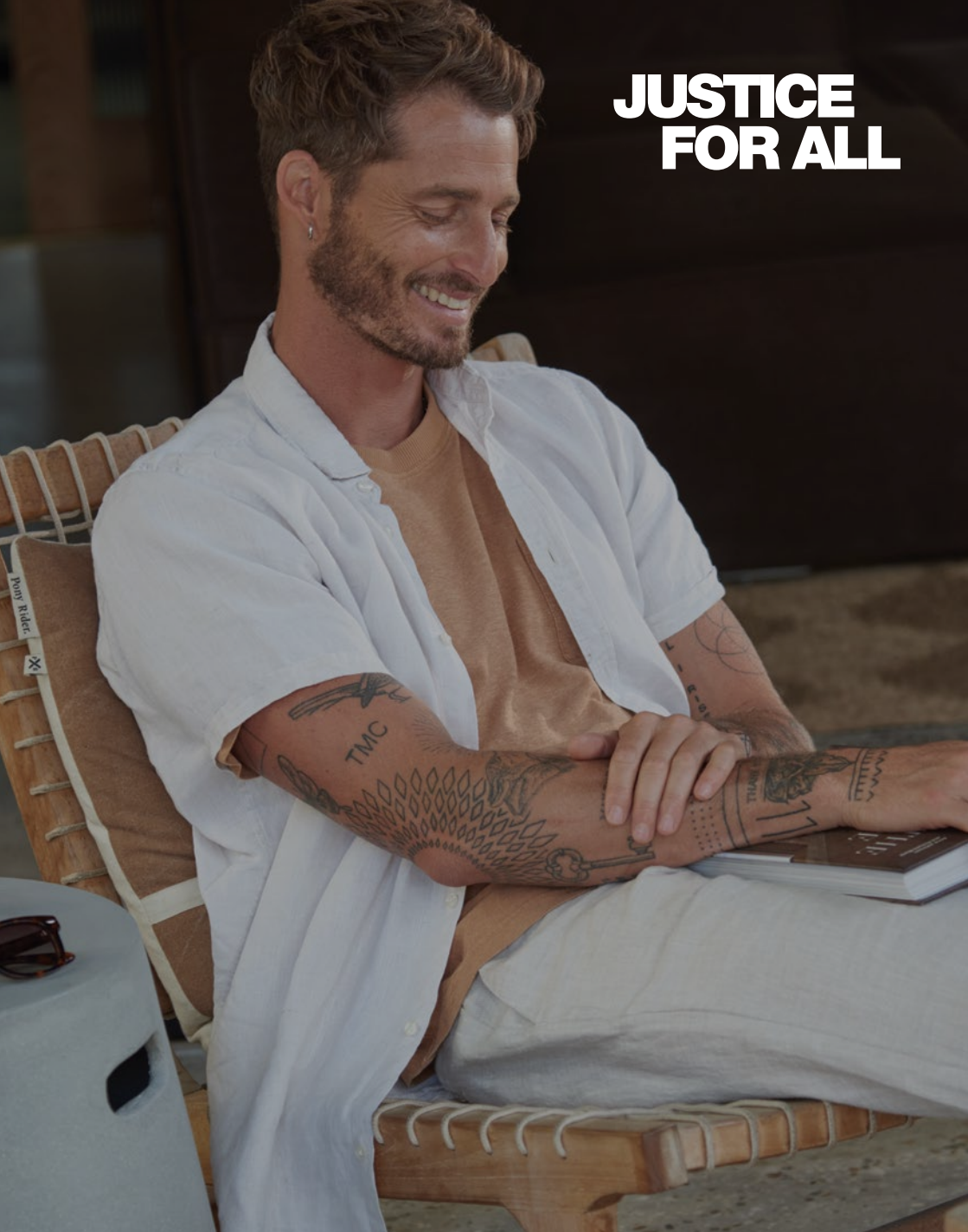
Camellia Oil & Almond

- Strengthen dry hair naturally, adds shine and radiance with prevention of split ends for longer lasting colour results

How to apply

Simply massage the colour cream evenly into hair, leave for 30 minutes, and wash out for flawless results. Full application instructions are detailed in every box.

**JUSTICE
FOR ALL**



JUSTICE
HAIRCARE™